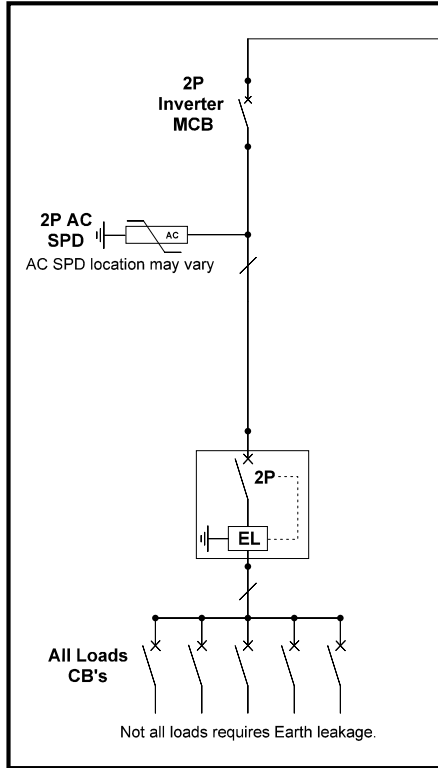
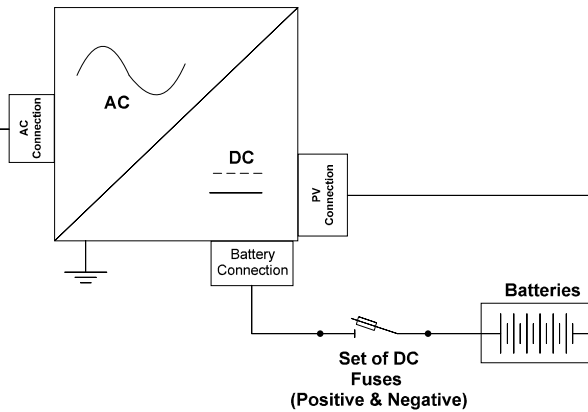


Main (AC) Distribution board

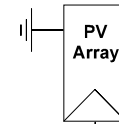
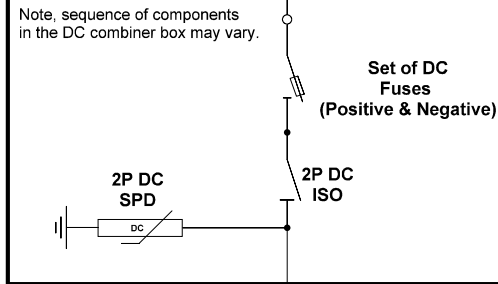


AC (Out) Cable
(Live and Neutral)
Earth cable to run separate

Off grid / Hybrid Inverter With Storage



DC Combiner Box (Junction box)



Notes:

Installation, Earthing, and bonding needs to comply with the latest version of the SANS 10142-1 and listed normative references and product specifications e.g.. SANS 60364-7-712 Systems with micro-inverters or power optimisers may have different wiring to that indicated in this drawing

NO inter-connection with a utility supply.

Legend:

Circuit breaker (CB)	
AC rated Surge Arrestor	
Single Phase indicator	
Earth leakage (EL)	
2 (two) Pole	2P
PV module	
DC rated fuse	
DC rated Isolator	
DC rated Surge Arrestor	
Earth connected symbol	
Inverter symbol	
Battery	

REVISION: Version 01

Municipal Embedded Generation Support Program Template

A set of drawings showing acceptable layouts for a range of different systems

www.sseg.org.za

DATE:

EDITOR:

INSTALLER:

SIGNOFF:

PRINT NAME:

PROJECT NAME:

Small Scale Embedded Generator
Off grid / Stand alone Inverter

Description:

Hybrid/Off grid system - All loads
Single phase - No utility connection

SCALE

N/A

SHEET

1

OF

1